

All In

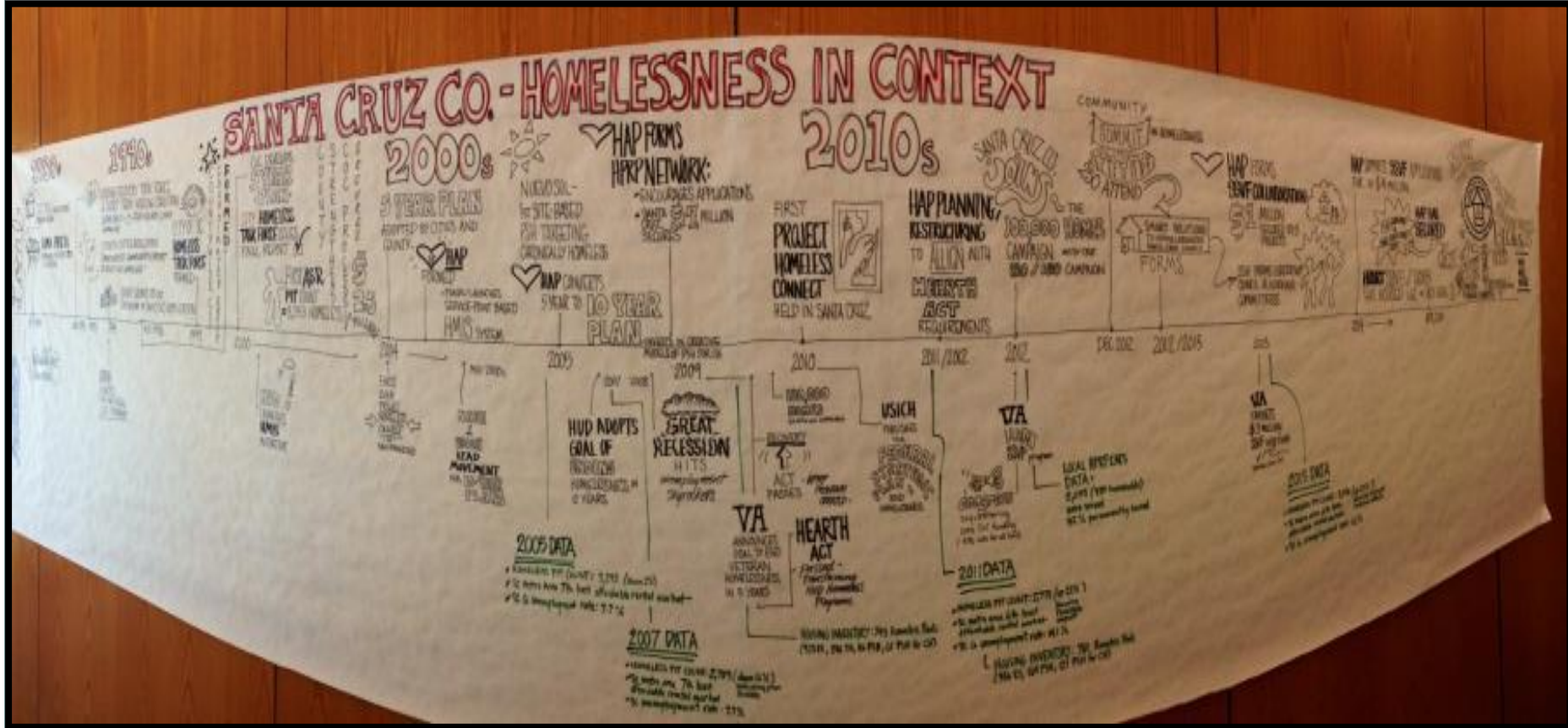


TOWARD A HOME FOR EVERY COUNTY RESIDENT

*THE SANTA CRUZ COUNTY COMMUNITY
STRATEGIC PLAN TO PREVENT, REDUCE, AND
EVENTUALLY END HOMELESSNESS*



Background



All In Vision



Access to safe, stable housing

Incomes to support well-being

Culturally competent services

Meet basic needs and lead dignified lives

Plan Purpose



Evidence-based,
solution-oriented
results

Prioritized
strategies

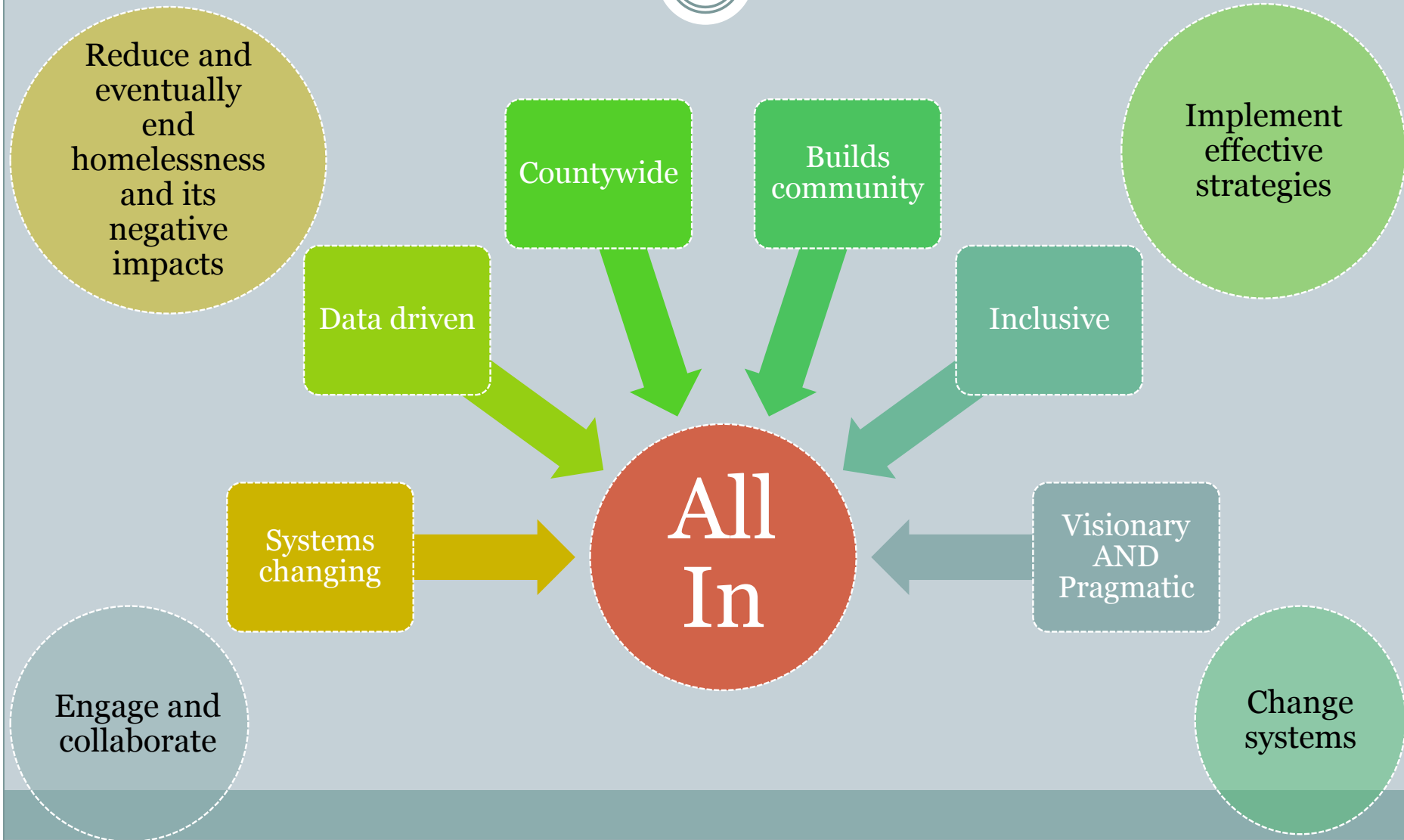
Single roadmap
for coordinated
action

Meet federal
requirements

Set funding
priorities

Transform the
system so it works
better and is more
cost effective

All In Mission & Guiding Principles



Developing the Plan



Strategic Planning Committee

30 members,
diverse perspectives



Process Design Team

*County HSD,
United Way,
Homeless Action Partnership,
Smart Solutions to Homelessness*



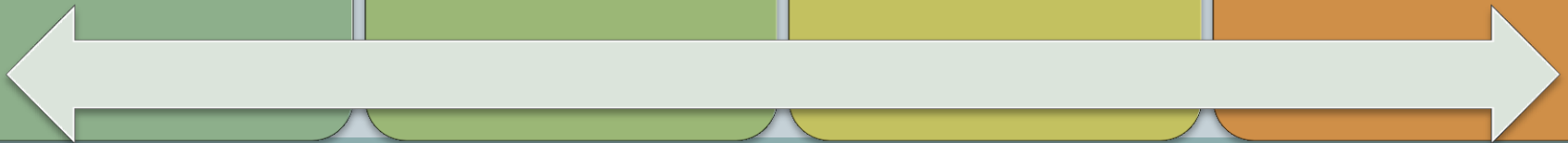
Work Groups

*Over 100 participants
focused on: Adults,
Families, Young People, Veterans,
Pajaro Valley*

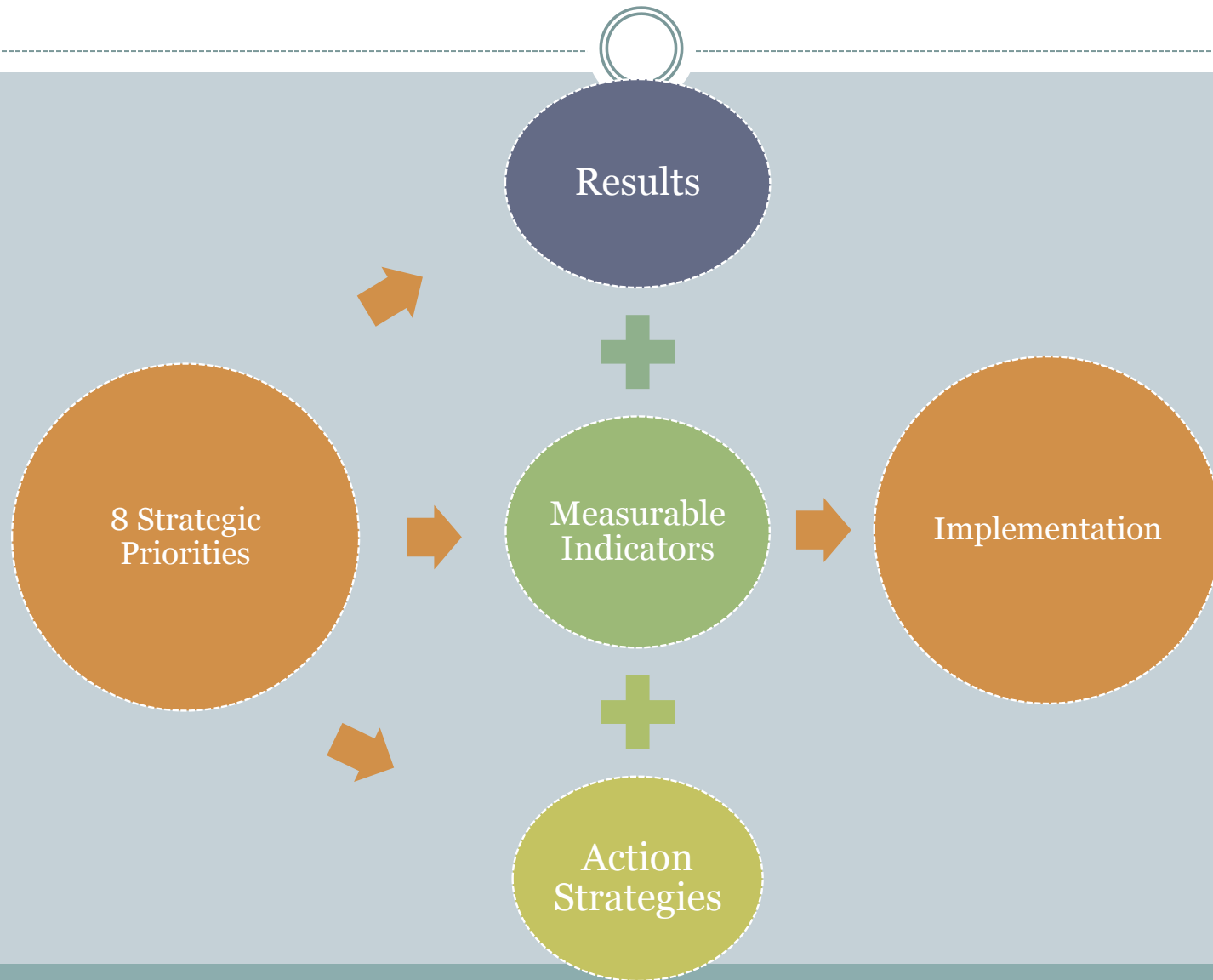


Public Forums

Watsonville & Santa Cruz 160 people, including persons with homelessness experience



What is in the Plan?



Strategic Priorities



Three System-wide Strategic Priorities

- Transforming the Crisis Response System
- Increasing Access to Permanent Housing
- Integrating Systems and Community Support

Five Population-Specific Strategic Priorities

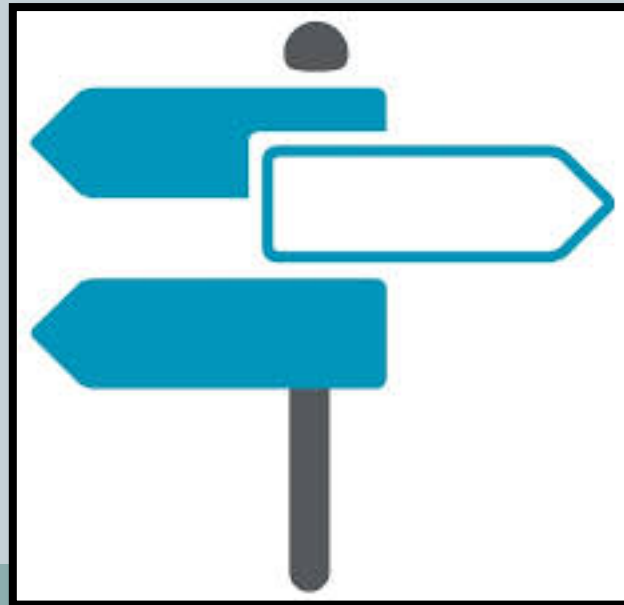
- Ending Chronic and Other Adult Homelessness
- Ending Family Homelessness
- Addressing Needs in South County
- Initiating a Response to Youth and Young Adult Homelessness
- Ending Veteran Homelessness

Strategic Priority 1: Transforming the Crisis Response System



Results

- Coordinated entry system implemented
- Increased prevention and diversion resources
- Interim housing returned to its emergency purpose

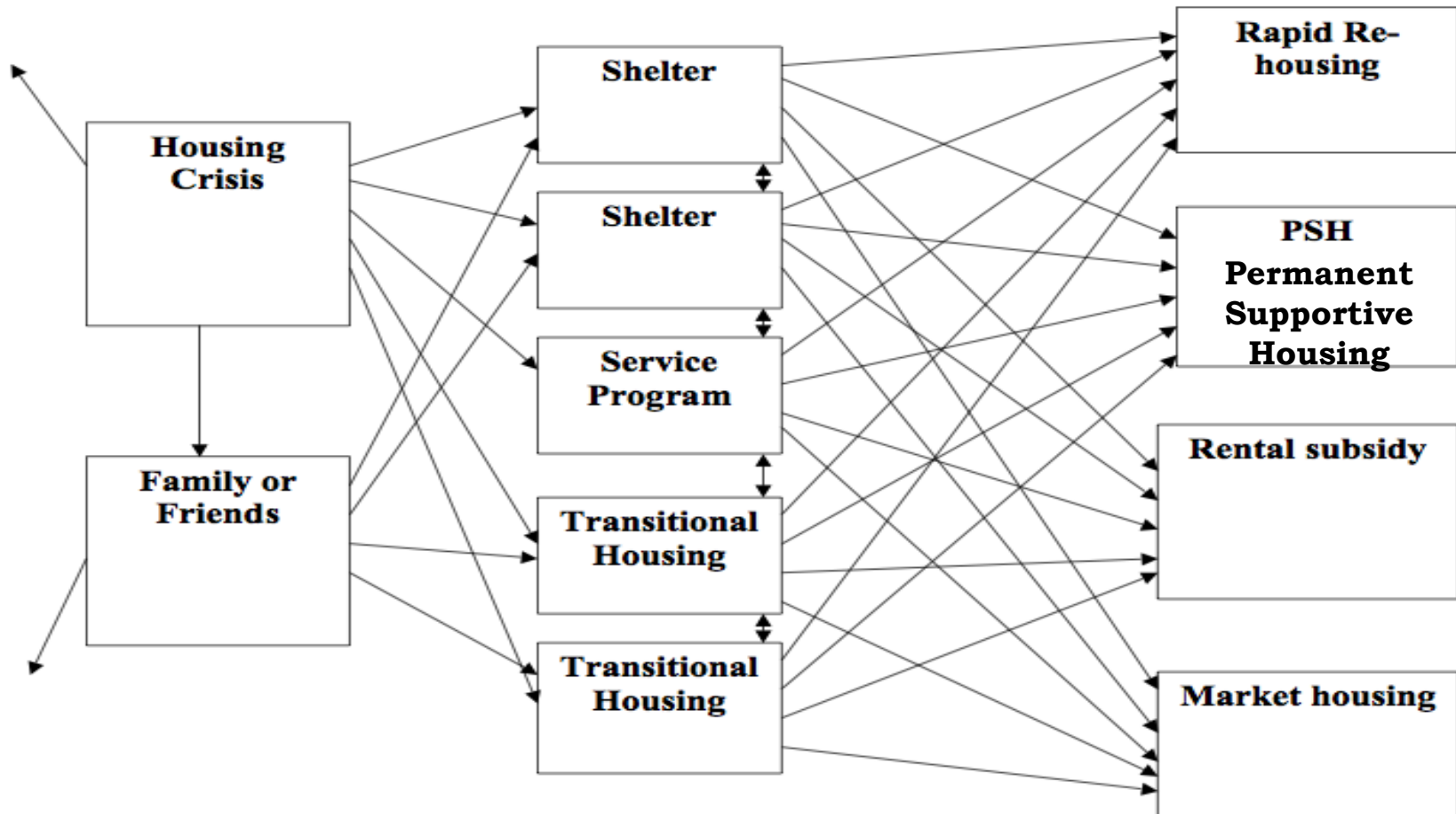


How the Crisis Response System Works Now



What Does the System Look Like Now?

Question Most People Ask Now: "Should we accept this individual/family into our program?"

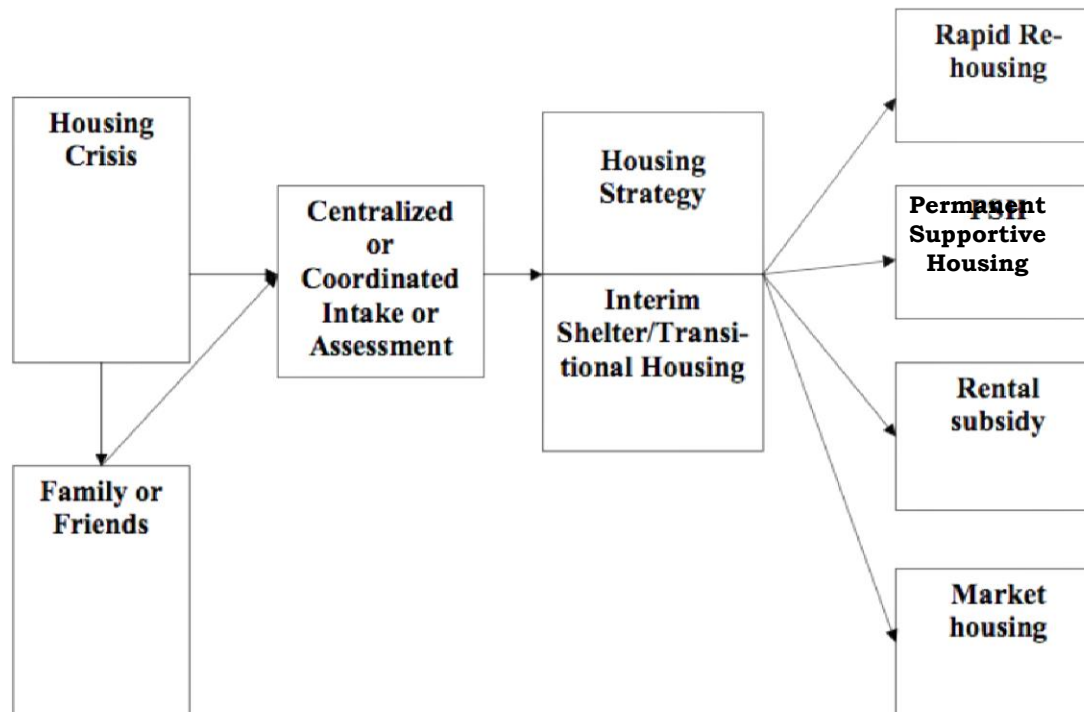


How Should Coordinated Entry Work



What Could the System Look Like?

Questions CoC Systems Should Be Asking: "What housing and service assistance strategy is best for each household of the several housing/service options available?"



Strategic Priority 2: Increasing Access to Permanent Housing



Results

- Sufficient permanent affordable housing
 - Rapid rehousing
 - Permanent supportive housing
 - Affordable housing for low-income & special needs populations



Strategic Priority 3: Integrating Systems and Community Support



Results

- Mainstream services
- Prevent institutional discharge of persons directly to the streets
- Community perception of safety is improved



Strategic Priority 4: Ending Chronic and Other Adult Homelessness



Results

- End chronic homelessness
- Reduce homelessness among seniors and other adults



Strategic Priority 5: Ending Family Homelessness



Results

- Family homelessness is ended
- Fewer families fall into homelessness



Strategic Priority 6: Addressing Needs in South County



Results

- Comprehensive, culturally competent homeless assistance system in the Pajaro Valley



Strategic Priority 7: Initiating a Response to Youth & Young Adult Homelessness



Results

- Comprehensive system of services for youth and young adults



Strategic Priority 8: Ending Veteran Homelessness



Results

- Veteran homelessness is ended by 2016
- Stable housing and supportive services



Plan Implementation

